

# Regel-air® FFLHA system for precisely dosed airflow volumes (centre gasket in window frame)

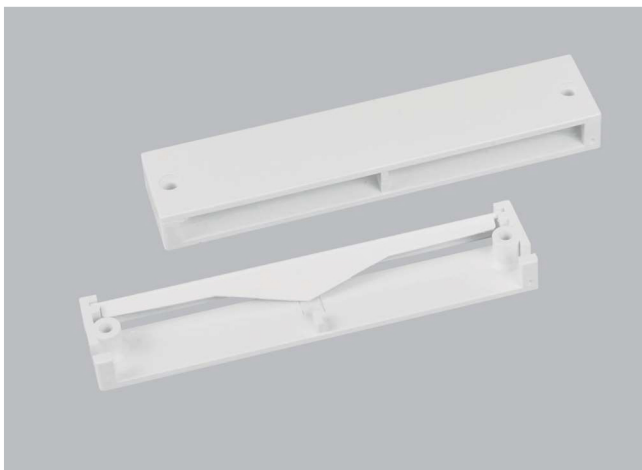
## Product data sheet Regel-air® FFLHA Window rebate vents for wood-aluminium windows Type 23

### Product description

Self-regulating PVC window rebate vent with 2-stage, automatic flow volume restriction intended for fitting in pairs. Type FL for horizontal installation. Type RF (with return spring) also for vertical installation.

For controlled air exchange and reliable dehumidification without drafts. To prevent mould damage. For normal and increased noise insulation requirements.

- Purely mechanical operation.
- No additional energy supply required.
- Classification of air permeability according to DIN EN 1026 and DIN EN 12207: Class 3 resistance to driving rain according to DIN EN 1027 and 12208 up to 600 Pa.
- Performance-tested according to DIN EN 13141-1.
- Permitted according to EnEV and DIN 1946-6.



Type 23 FL  
For horizontal installation



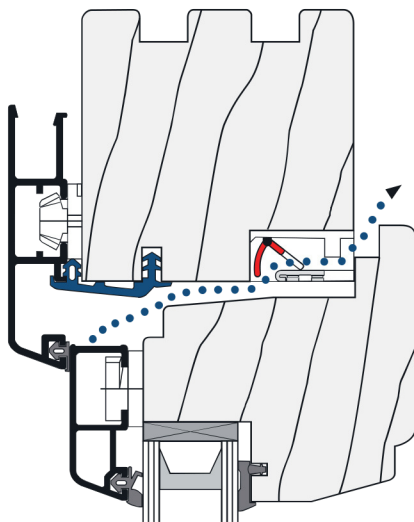
Type 23 RF  
for vertical installation

## Areas of application

- As a ventilation system for moisture protection in new as well as existing buildings. User-independent and tamper-free. For the prevention and control of the causes of mould formation.
- In wood-aluminium windows, the Regel-air® window rebate vents can only be used as external air apertures in combination with permanently operated fan-assisted exhaust air systems.
- Suitable for factory installation as well as for retrofitting of previously installed windows.



Also suitable for use in the protection of historic monuments



Example  
Wood-aluminium windows

## Operation and fresh air routing

The outdoor air is directed to the modules via the inflow area. The air is transferred further through the Regel-air®. From there, the fresh air is guided into the room interior in a controlled manner through small additional milled openings in the window frame and window casement.

When wind speeds are stronger, the ventilation flaps automatically limit the inflowing air to prevent draughts.

Operation is purely mechanical: The vents react automatically to changes in wind pressure on and around the building.

# Product data sheet Regel-air® FFLHA

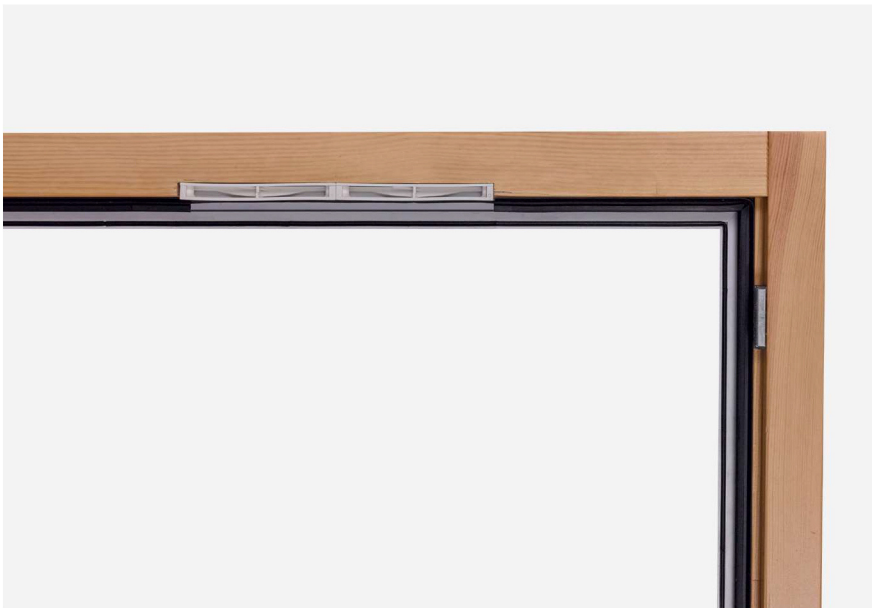
## Window rebate vents for wood-aluminium windows

### Type 23

#### Installation

The Regel-air® window rebate vent is installed inconspicuously in the frame rebate. It is invisible from the inside or outside when the window is closed. Installation is always carried out in pairs.

Installation can be carried out directly in the factory during window production. Retrofitting of previously installed windows on-site is also possible. After milling, the vents are simply attached by screwing them onto the window frame. Additional installation details are provided in the "Regel-air® FFLHA installation instructions" information leaflet.



Regel-air® FFLHA installed




# Regel-air® FFLHA Type 23 window rebate vents for wood-aluminium windows with centre gasket in window frame

## Product data overview

Compatibility	Wood-aluminium windows with centre gasket in window frame
Width of pair of vents (2 individual vents)	250 mm
Width of individual vent	125 mm
Air control	Automatic, flow volume-dependent
Feasible airflow volumes in the range from 2 to 8 Pa	Depending on vent combination 3.0 to 7.2 m <sup>3</sup> /h
Permissible limit value according to DIN EN 12207	at 100 Pa 9.0 m <sup>3</sup> /h
Classification according to DIN EN 1026 and DIN EN 12207	Class 3
Resistant to driving rain according to DIN EN 1027 and DIN EN 12208	No water ingress up to a maximum test pressure of 600 Pa
Special instructions	Only in combination with exhaust air systems

Values may differ slightly depending on profile and window.

# Air permeability for Regel-air® FFLHA Type 23

FFLHA - for precisely dosed airflow volumes										
Differential pressure according to DIN 1946-6 in Pa			2	3	4	5	6	7	8	SFG
Airflow volume in m <sup>3</sup> /h	1 pair FFL		3.0	3.4	3.8	4.0	4.3	4.6	4.9	per 300 mm
	1.5 pairs FFL		3.9	4.4	4.8	5.2	5.4	5.6	6.0	per 300 mm
	2 pairs FFL		4.8	5.3	5.8	6.1	6.5	6.8	7.2	per 300 mm

Centre gasket in front of ventilation elements removed.  
Observe DIN EN 12207 and DIN 4108-2.

Values may differ slightly depending on profile and window.

Subject to technical changes - legal liabilities cannot be derived from this.